

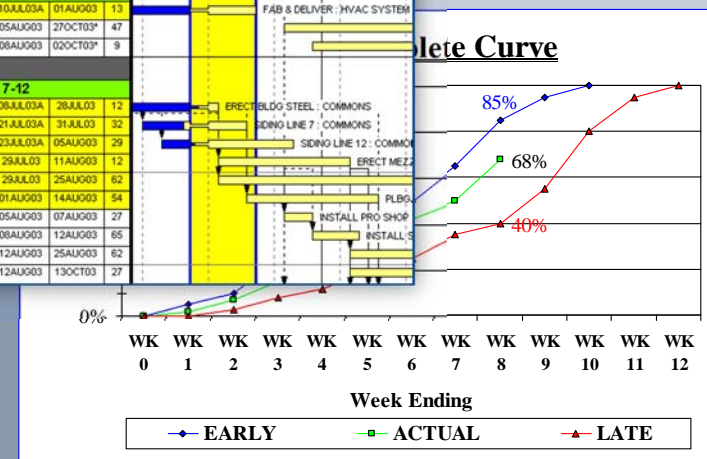
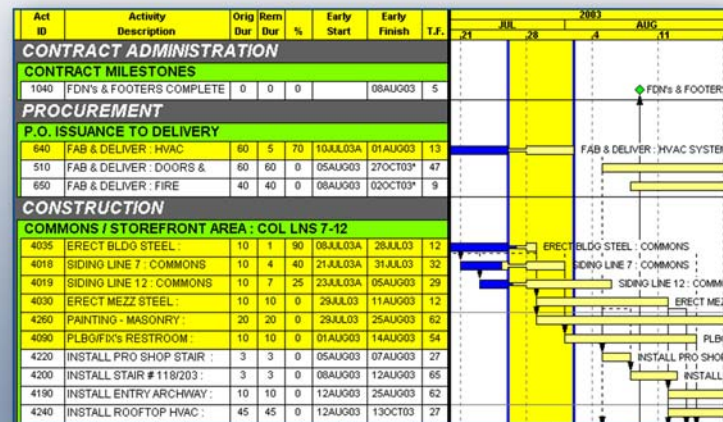


GAP Project Controls Services, Inc.

Schedule Management Services

NOW ANY SIZE PROJECT CAN BENEFIT FROM CPM SCHEDULING TECHNIQUES!

Give your project the management tools it needs to finish on time and under budget!



Schedule Management Services



➤ The project schedule is your map to success.

GAP can guide you to your destination....

A SUCCESSFUL AND PROFITABLE PROJECT!

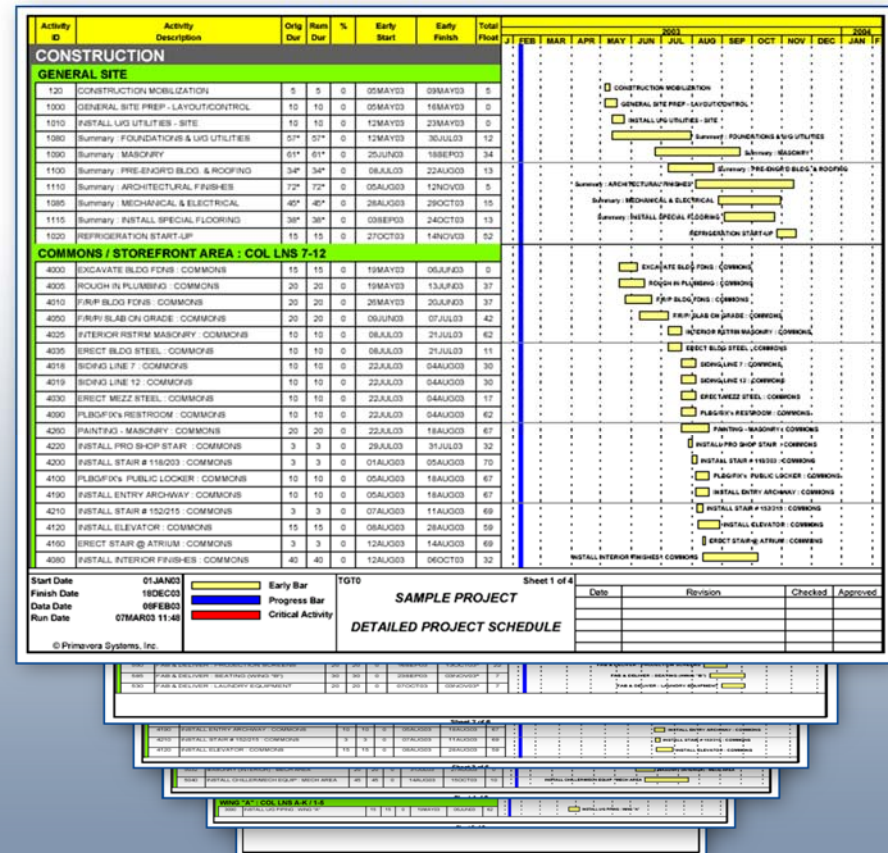
- **GAP** will tailor your schedule to meet intercompany needs as well as fulfilling your contractual obligations to the owner.
- Time is of the essence. **GAP** will highlight trends **EARLY** in order to provide for reaction time.
- Most importantly, **GAP** will allow management to make decisions based on fact rather than emotion.

Services Available



➤ Preparation of detailed project schedules (or conversion / modification of existing schedules)

- ✓ All schedules will provide adequate detail and logical sequence
- ✓ Can be resource loaded (if required) in order to manage workforce, progress, equipment, and or cash flow



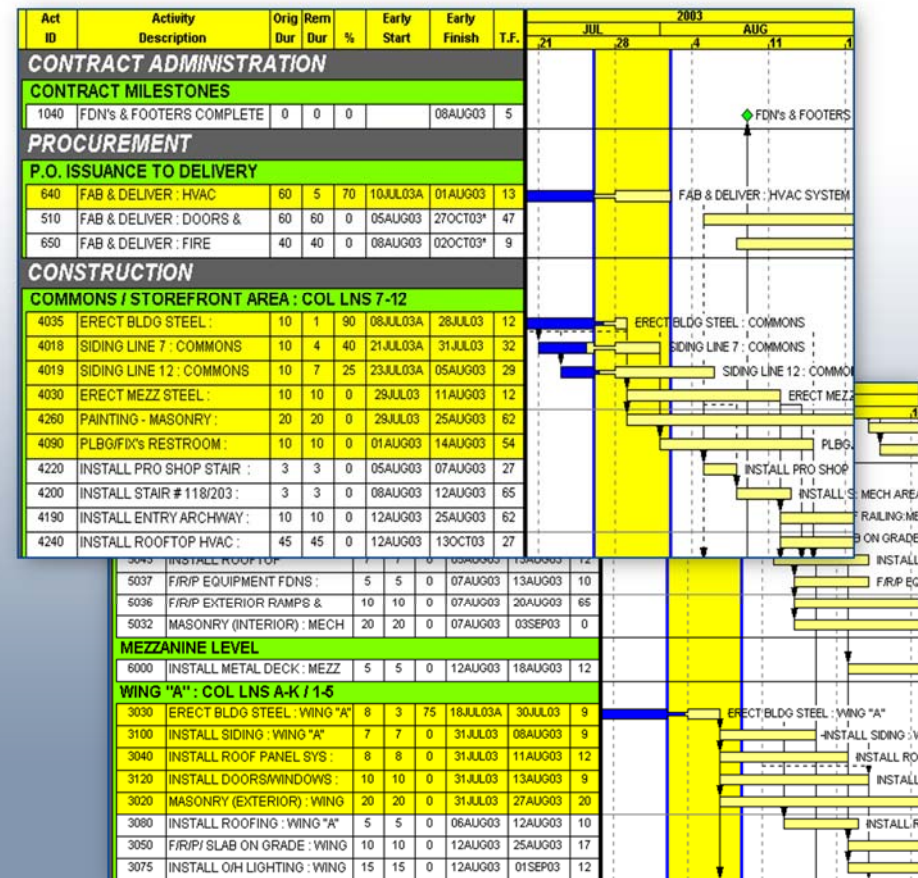
Services Available (continued)



GIVE YOUR PROJECT THE ATTENTION IT NEEDS!

➤ Detailed rolling schedule

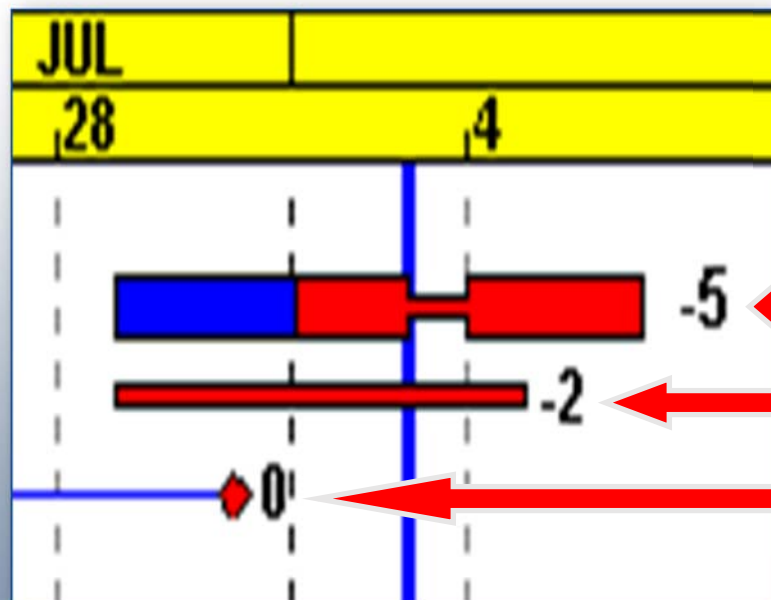
- ✓ 1 week back / 3 weeks ahead
- ✓ Current week activities are shaded for clarity
- ✓ Relationship lines optional
- ✓ Weekly updates typical
- ✓ Other update options available by request



Services Available (continued)



Establish a trend by comparing your current schedule status with up to two previous schedules



TIME TO TAKE ACTION!

Currently : Total Float -5 : Slip of another 3 days

Last week : Total Float -2 : Slip of 2 days

2 weeks ago : Total Float 0 and on Critical Path

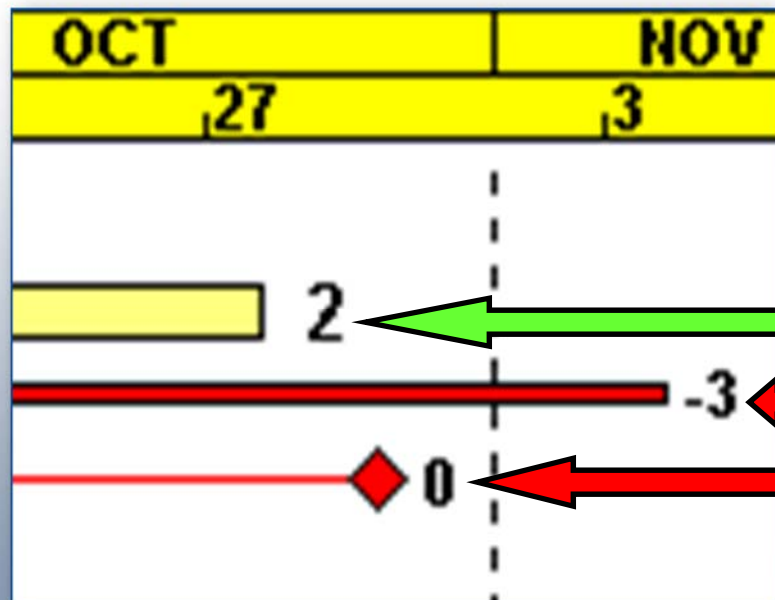
<NEGATIVE> Trend Established - Schedule is falling behind

Services Available (continued)



EARLY RECOGNITION!

***CHANGES INCORPORATED
IN TIME TO ELIMINATE
POTENTIAL DELAYS AND
IMPACTS!***



Currently: Total Float +2 : Gain of 5 days

Last week: Total Float -3 : Slip of 3 days

2 weeks ago: Total Float 0 and on Critical Path

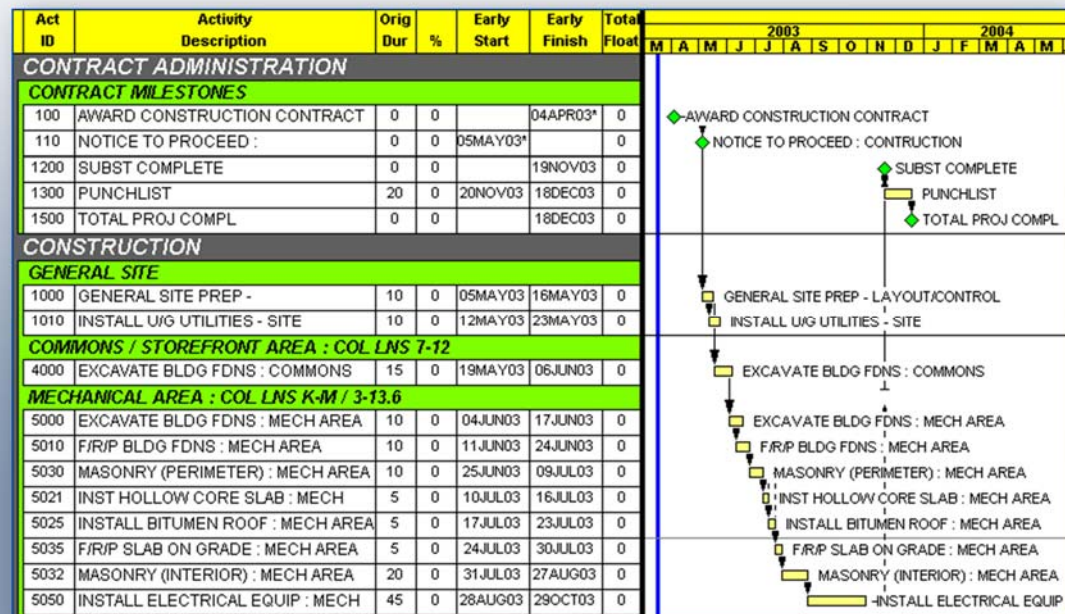
Trend Reversed - Schedule is back on track!

Services Available (continued)



➤ Critical (Longest) path schedule

- ✓ Representing all longest logical paths through project completion
- ✓ Shown with relationship lines
- ✓ Weekly updates (typical, on-site or remote available)

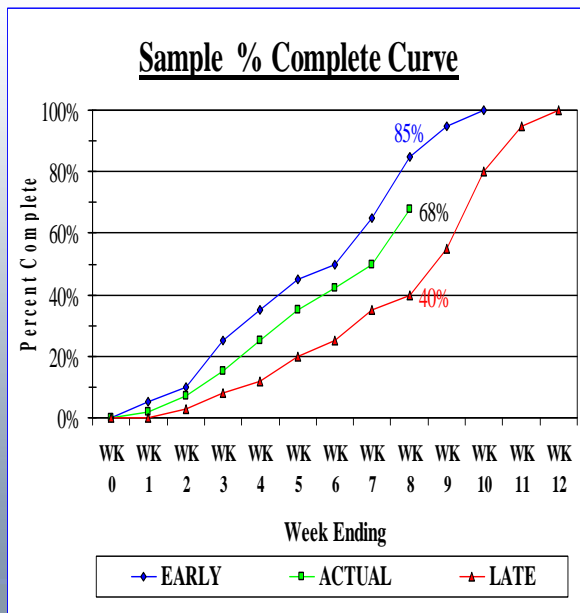


Services Available (continued)

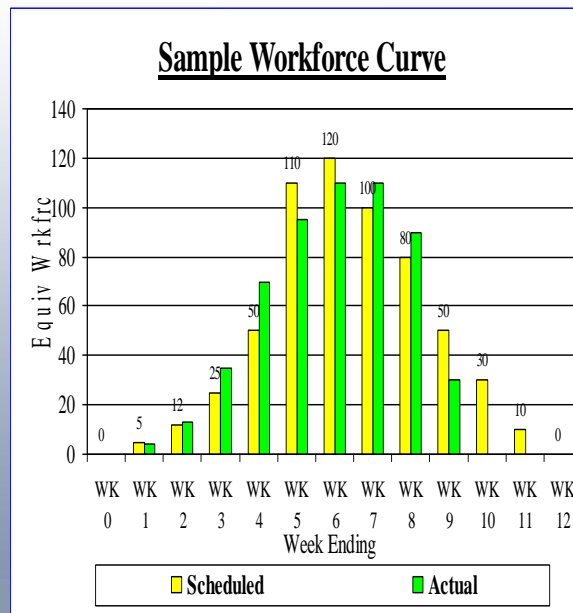


GRAPHICAL REPRESENTATION OF PROJECT STATUS

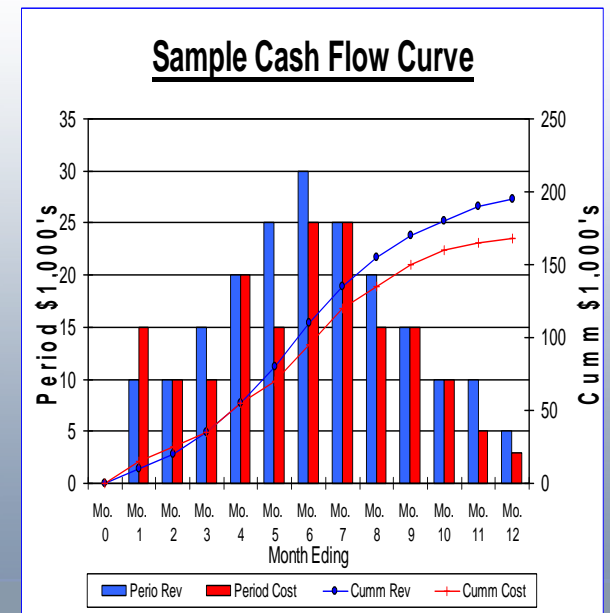
Progress curves



Workforce curves



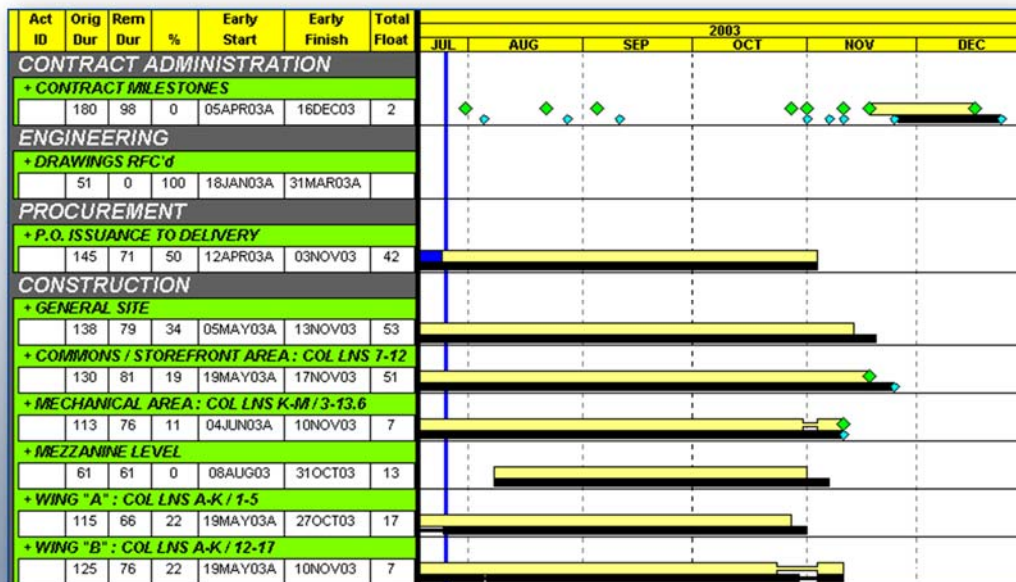
Cash flow curves



Services Available (continued)



Summary Level Schedules



Critical Path Analysis

Longest Path - +3 GAIN

- The progress made at the mechanical room foundations was the driving factor on bringing the Total Float from <3> to +0
- Due to this progress, the longest path logic string shifted from the mechanical room to Wing "B" which is driven by the delivery of the siding. This in turn drives the intermittent milestone for building enclosure (Act # 1060) to 14OCT03.
- 60 activities improved Total Float while 20 activities lost Total Float (primarily the commons area)

Services Available (continued)



➤ Additional services available :

- ✓ Bid schedule preparation
- ✓ Re-scheduling consultation (logic adjustments)
 - Via personal site visit / meeting
 - Telephone communication
 - Typical monthly service (or as required)
- ✓ Preparation of time impact analysis
 - Provide supporting documentation (i.e. schedules and reports) for claims and/or change orders.
- ✓ Cost analysis
 - Provide consultation regarding all aspects of cost engineering including, but not limited to, budgeting, forecasting, trend analysis, unit rate and productivity measurement

Advantages to This Approach



- Extremely affordable
- Timely
- Quantifiable
- Provides accountability
- Remote updating capabilities
- Motivation and incentive
- Upper management overview
- Documentation
- Cost determined by workload
- Standardization

Give your projects, NO MATTER THE SIZE,
the luxury of CPM scheduling techniques
without the costly overhead!

How the System Works



➤ Step #1: Schedule Establishment

- Either developed from scratch or existing schedule converted/modified.
- This is where the level of detail is determined and what (if any) resources are to be loaded.
 - Suggest direct links to project estimate
 - Possible resources:
 - MAN-HOURS (by discipline)
 - COST (Revenue and Budget)
 - QUANTITIES
 - EQUIPMENT
- Schedule is managed through approval process
- After approval, schedule is locked in and established as the target
- Schedule is archived for future comparison and reference

How the System Works (continued)



➤ Step #2: Weekly Updates

- Project begins and schedule requires updating
- GAP selects activities from the rolling schedule filter (1 week back and 3 weeks ahead) and exports to Microsoft Excel.
- GAP sends file via e-mail to PROJECT for updating.
- Key data requiring updating:
 - Actual dates (starts and finishes)
 - Percent complete
 - Remaining duration
 - Additional activities (i.e. change orders)
- PROJECT updates key data contained in the Excel file, renames the file, and sends back via e-mail.
 - Note: Update can be done via facsimile and manual entry into the schedule. This method is less efficient and therefore requires more time and cost.

How the System Works (continued)



➤ *-Step #2: Weekly Updates continued-*

- GAP reviews Excel file and imports electronically into current schedule. The schedule is updated to establish the current project status.
- GAP renames the schedule (filename format TBD). Schedule is reviewed and analyzed.
- GAP generates required reports (PDF and P3 backup) and transmits to PROJECT via e-mail.

➤ *Step #3: Weekly cycle is complete!*

- A one day turnaround is anticipated (from the day the file is received from the PROJECT).

➤ *Step #4: Logic Adjustments*

- On a periodic basis (typically monthly or as required), the schedule logic may need to be adjusted. This frequency is based on contract specifications as well as the ability of the project to progress as originally scheduled. This consultation is available for each project as necessary.

Schedule Management Services

*This affordable approach
to project scheduling will
minimize impacts and
maximize profits!*

Software Utilized



- Primavera Project Planner (P3)/Project Professional (P6)
 - ✓ Widely recognized scheduling software
 - MS Project optional
- Primaplan Project Investigator (P3)/Change Inspector (P6)
 - ✓ Comparison software which details changes from update to update
- Adobe Acrobat
 - ✓ Documents are transmitted in PDF format
- Microsoft Office Products

GAP Relative Experience



Over 16 years experience in the following:

INDUSTRIES

Heavy/Highway (DOT)

Government

Pulp & Paper

Water/Waste Water

Power

Petrochemical

Commercial

Foods

ENVIRONMENTS

Construction Mgmt.

Direct Hire

Field Assigned

Corporate Office

Union

Open Shop



**GAP Project Controls
Services, Inc.**

Schedule Management Services

Allow **GAP** to protect your interest in your projects!

Glenn A. Palso

42 Willow Oak Court
Simpsonville, SC 29681
(864) 320-9898

gpalso@charter.net

Resume available by request